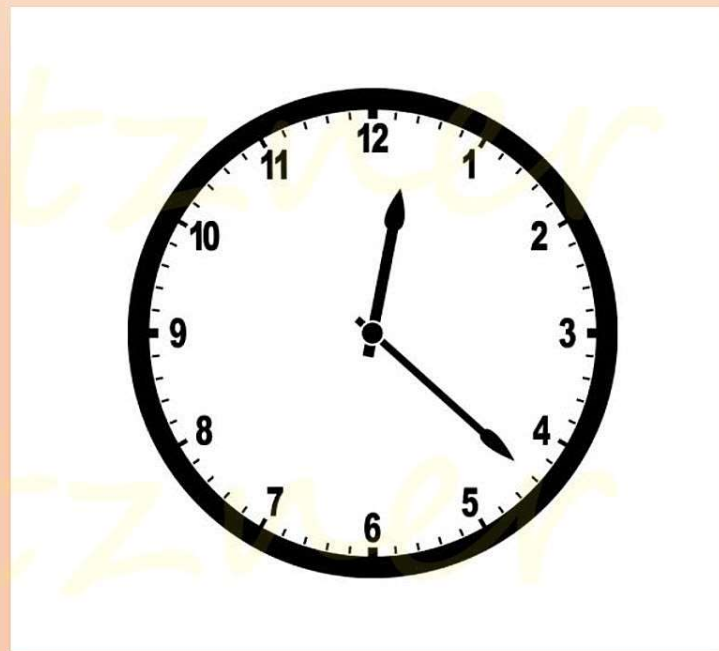


Flaming Timepieces



What Are They?



Lighters with built-in Timepieces

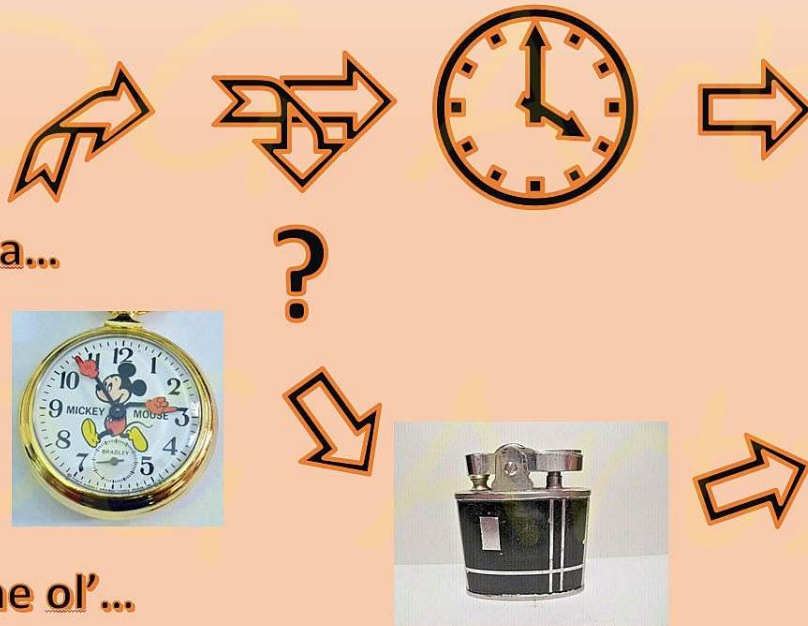
Why?

"Got Bored"

Bla...Bla...



Same ol'...same ol'...



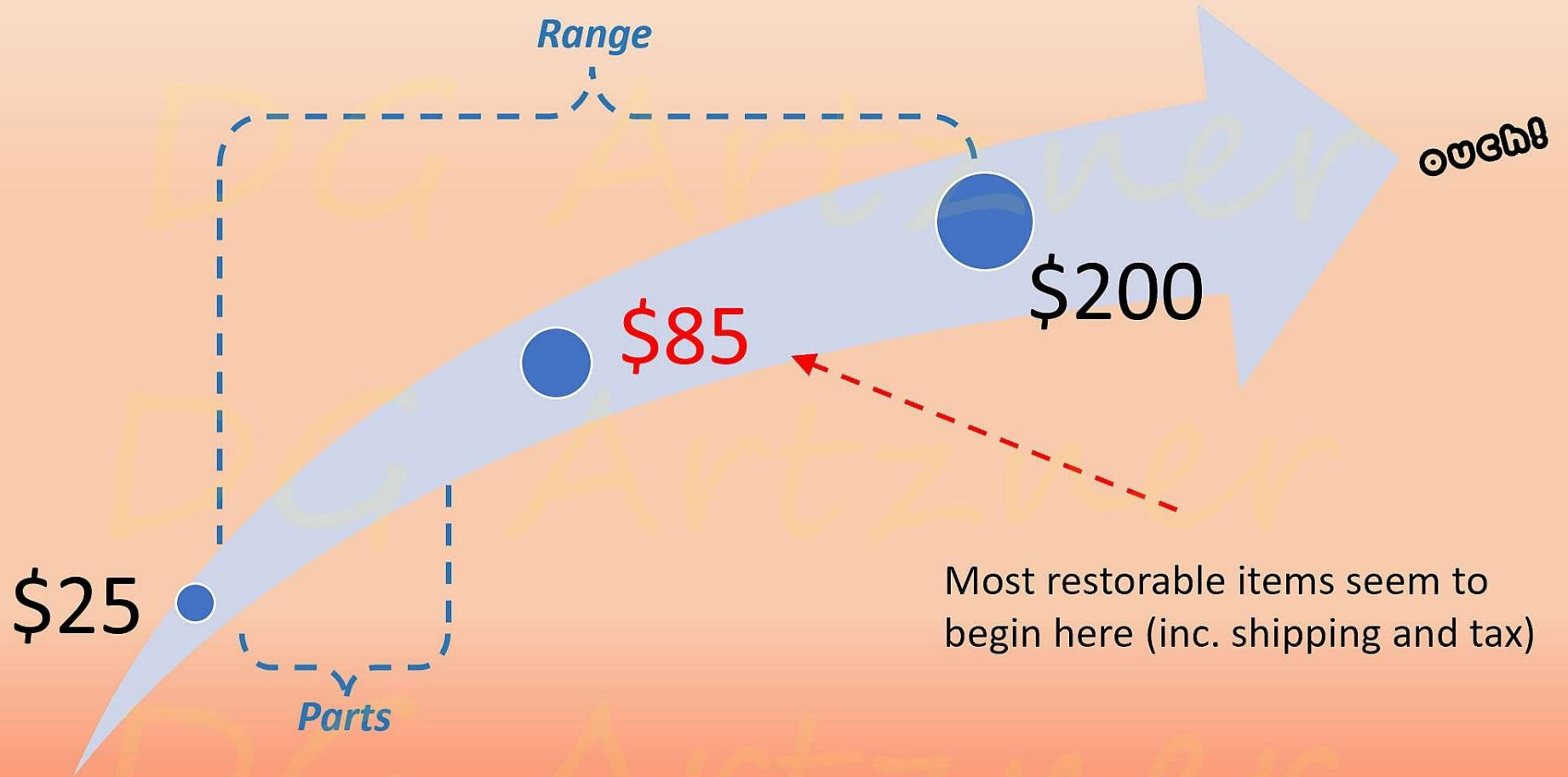
It started with a couple.....then 3 or 4.....so

Self Imposed Constraints

1. Spending Limit
2. Fuel Type
3. Mechanical timepieces
4. Restorable

Self Imposed Constraints

- Spending Limit -



Self Imposed Constraints

- Fuel Type -



Standard Fuel Only



Self Imposed Constraints

- Mechanical Only -



Self Imposed Constraints

- Restorable -



Poor finish - Missing part(s) - Abused



(Windsor Time Lite 1930s)

Who Made Them?

Lighters with Timepieces were made mainly in Switzerland, Japan, Germany, France and U.S. are generally zero size (small wrist watch)

=====

Lighters were made in most major countries

(At least one made in Abeline, Texas)

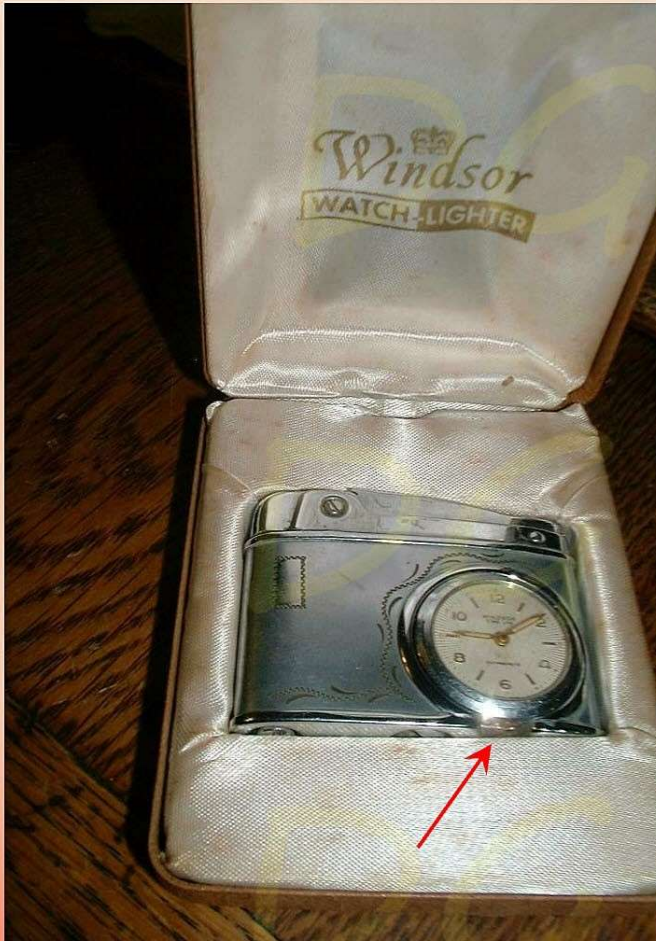
Lighter Repair

Off Topic but.....Is It worth repairing?



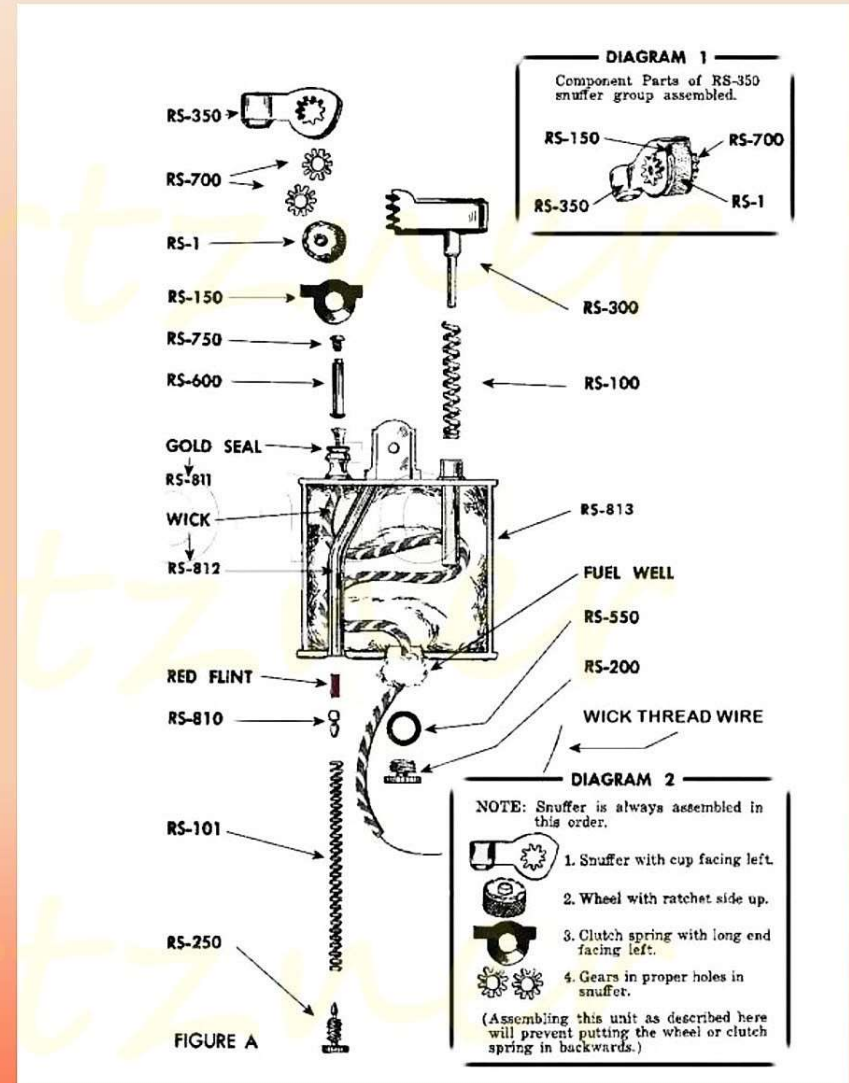
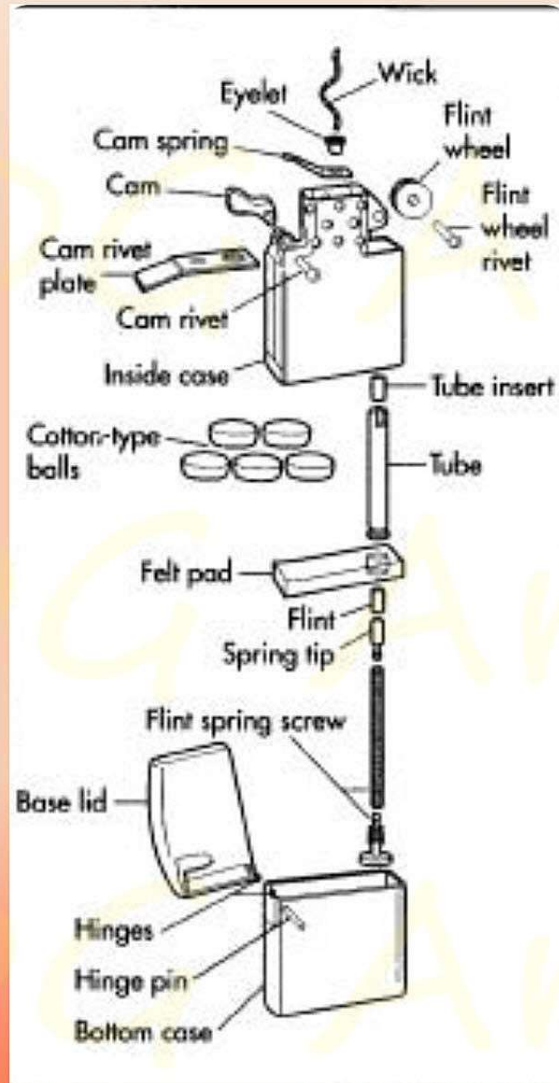
Lighter Repair

How about this one.....Is It worth repairing?



Lighter Repair

“Parts Is Parts”



Source: Repair Manual
For All Cigarette Lighters
(foreign and domestic)
Gilbers J. Gaugler, 1954
Pittsburg, Pa.

Lighter Repair

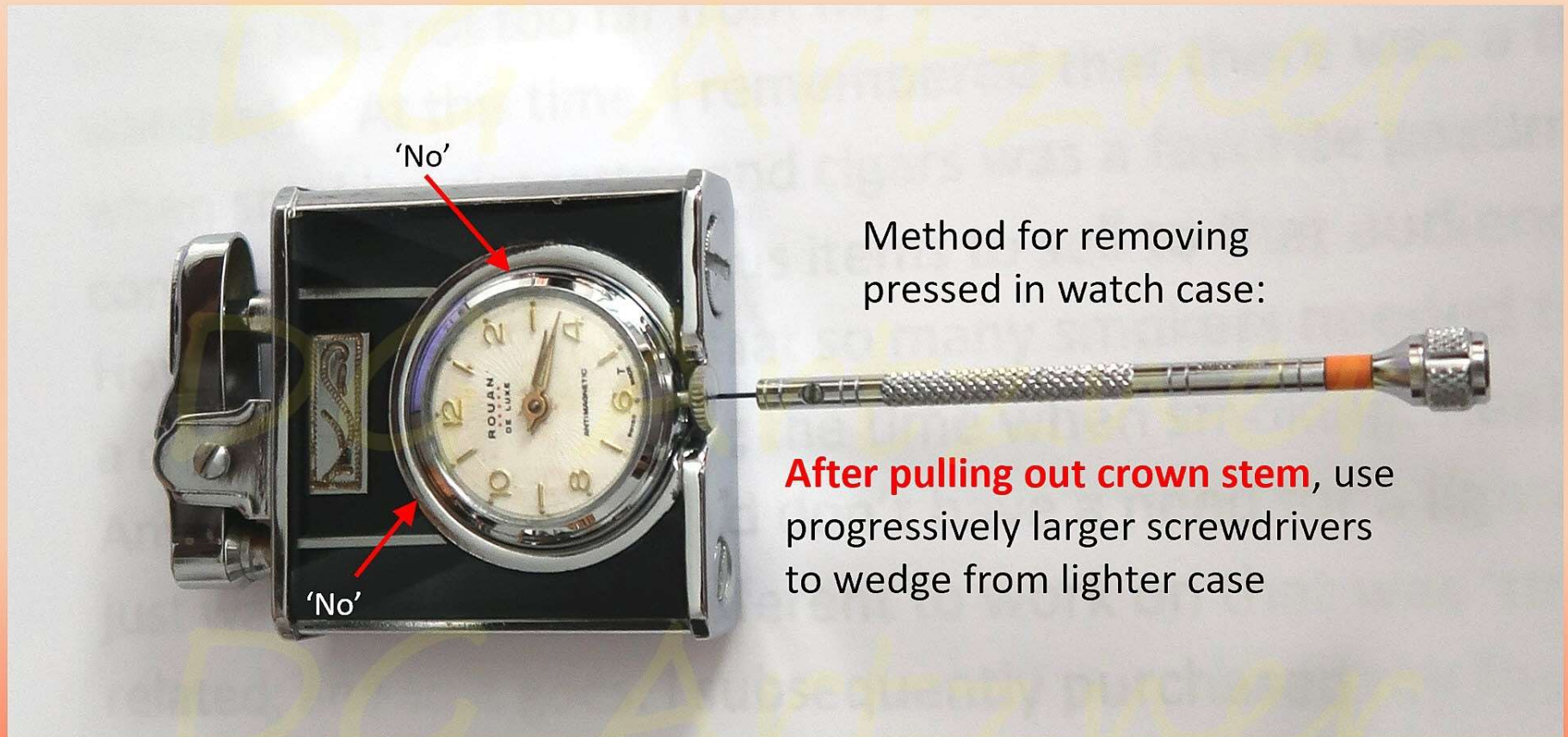
Lighter flint (actually ferrocerium) was patented by Carl Auer von Welsbach in 1903



(Ronson developed its first flint lighter, called the "Wonderlite" in 1913.)

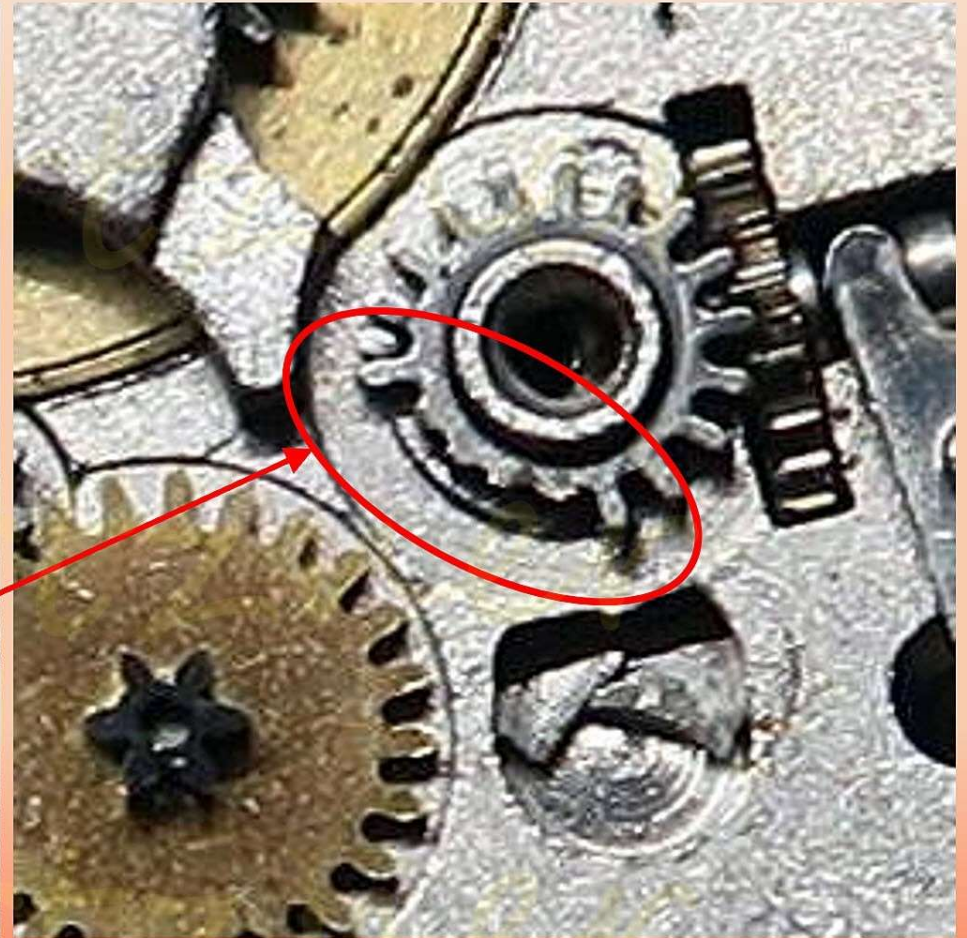
Watch Repair

Care must be made when removing watch.



Watch Repair

Majority Need Servicing But



Examples By Group

1. Semi Automatic – (dual action) lift cap and strike
2. Automatic – (single action) press lever
3. Desk or Tabletop – Semi and automatic
4. Other (Departure)

1. Semi Automatic



Golden Wheel

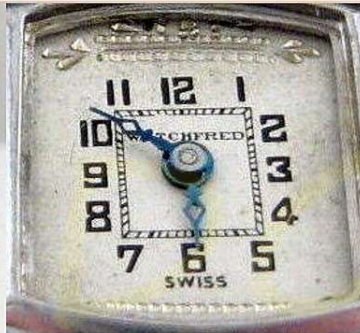
U.S. Patent August 2, 1927



1. Lift Arm (snuffer)
2. Rotate Striker Wheel

Swiss Movement

Semi Automatic



Easy access



Watchfred - Swiss - 6 Jewels

Semi Automatic

Rexlite (Rex Int. Corp. Providence, R.I.)



Bedford
6J, 2 Adj.
Swiss



Semi Automatic



*Elgin Otis Sterling
1929*



Elgin 488 7j movement



(source WorthPoint.com and eBay)

Semi Automatic



Japan Enduralite with Endura
Swiss movement 1950s



1950s - Zurich Rivo 17J
Antimagnetic – Swiss

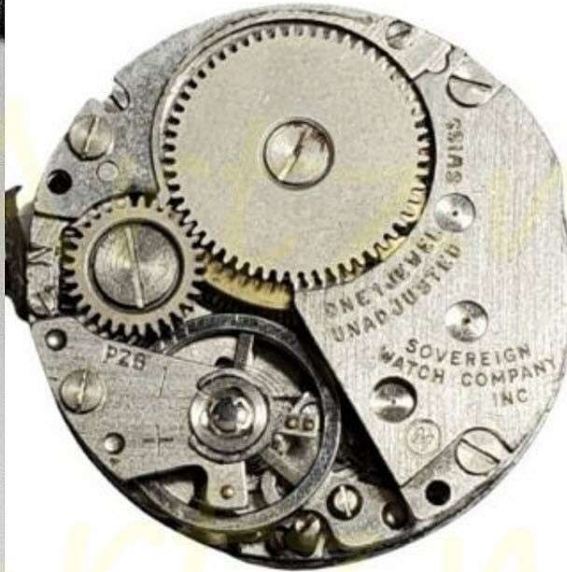


Zurich - Rivo 17J dial

Semi Automatic



Spritzer + Fuhrmann
Swiss - 1968



Swank with Sovereign
1 Jewel movement
Swiss - 1970s



2. Automatic



Eclydo- Emerald - Germany
16j – Swiss mvt. - 1950s
'Seconds hand'



Gisa Delux - Time Light - Swiss
Antimagnetic - Swiss

Automatic

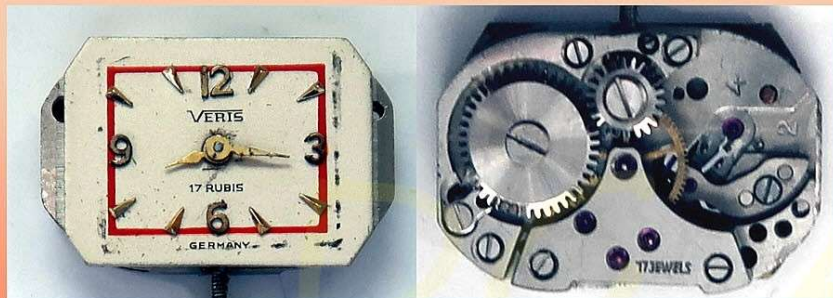
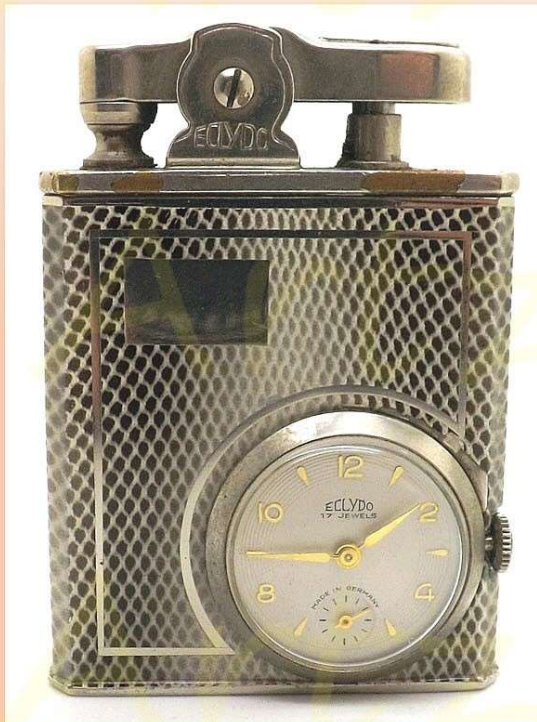


Windsor Satellite – Japan 1960
Time Lite - Antimagnetic – Swiss Mvt.

Automatic



ZVG Aristo – Germany - 1954



Veris Swiss 17 Jewels

'Seconds hand'

Eclido – Self Wind
17J German mvt.
U.S. Patent 1950s

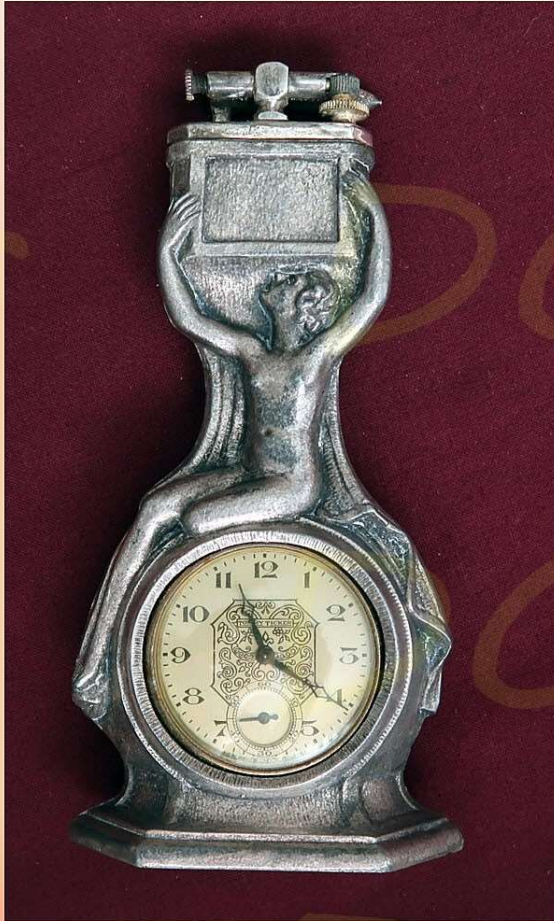


Automatic



Evans Case Co. (North Attleboro, MA) Lighter/watch/cigarette (cigar) container
E. Ingraham (Bristol, Ct.) Model 51 (L) 0 Jewel movement
Late 40s – early 50s

3. Desk or Tabletop



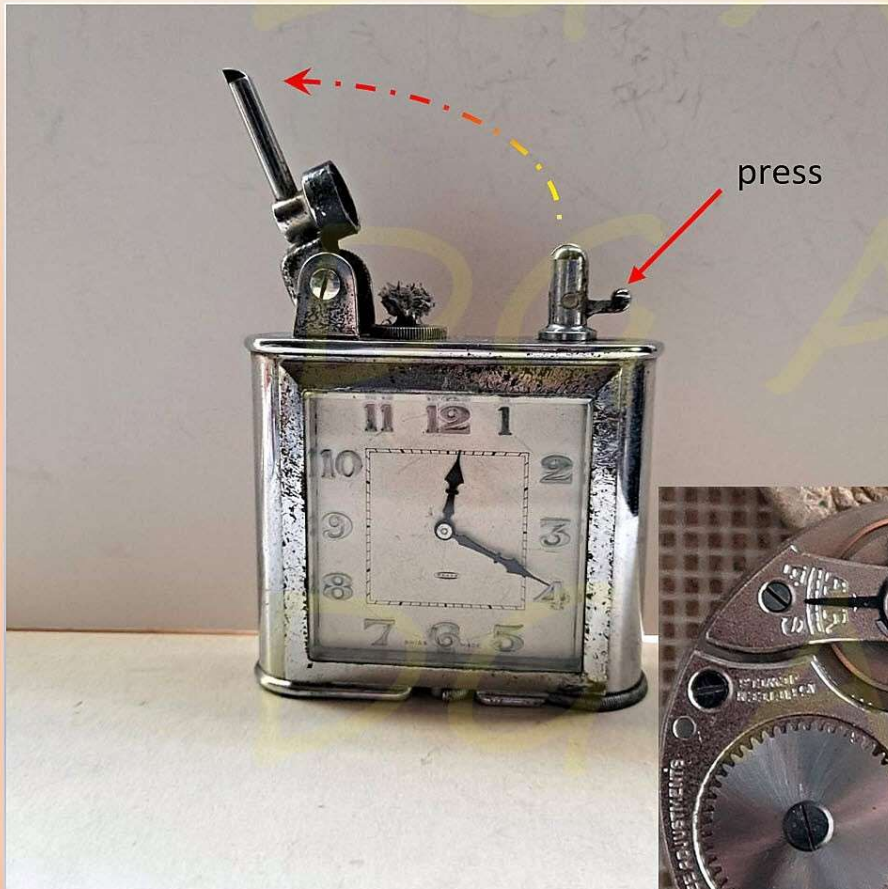
New Haven, U.S.A. - Tommy Ticker 1920s-30s (8" high)

Desk or Tabletop



Triangle (USA) Lift Arm - Six Sided – Swiss mvt., 15J, 2 Adjustments - 1927

Desk or Tabletop



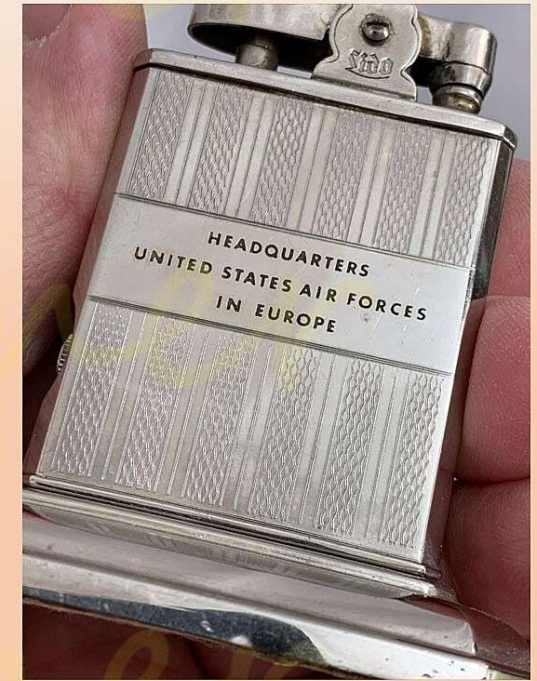
LANCEL (French) table lighter with 8 day, 15J, Adj 3 pos, Swiss clock. Circa. 1930.

Desk or Tabletop



Colibri 'Monopol', London – 8 Day Swiss 1928

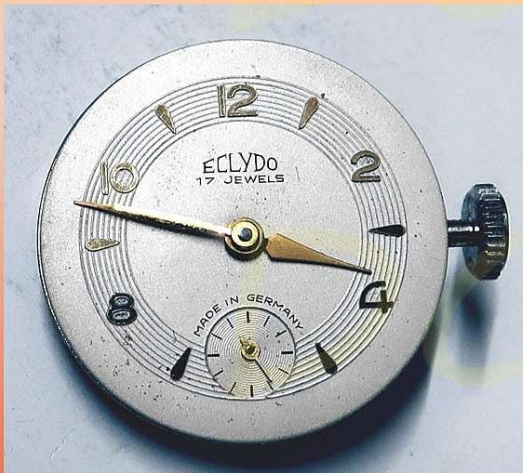
Desk or Tabletop



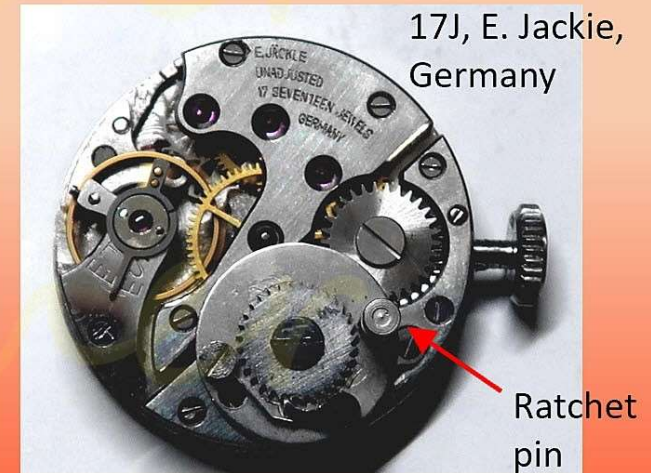
Ht: 3"



press



Pin slot

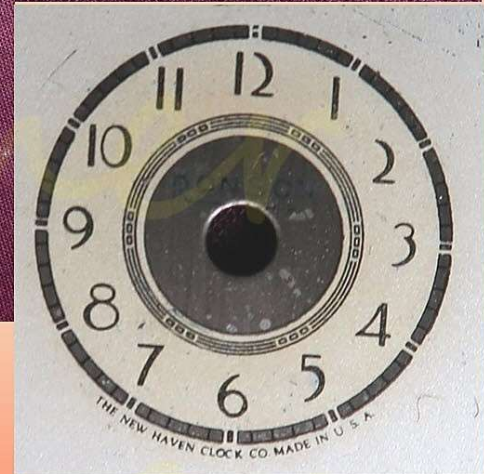
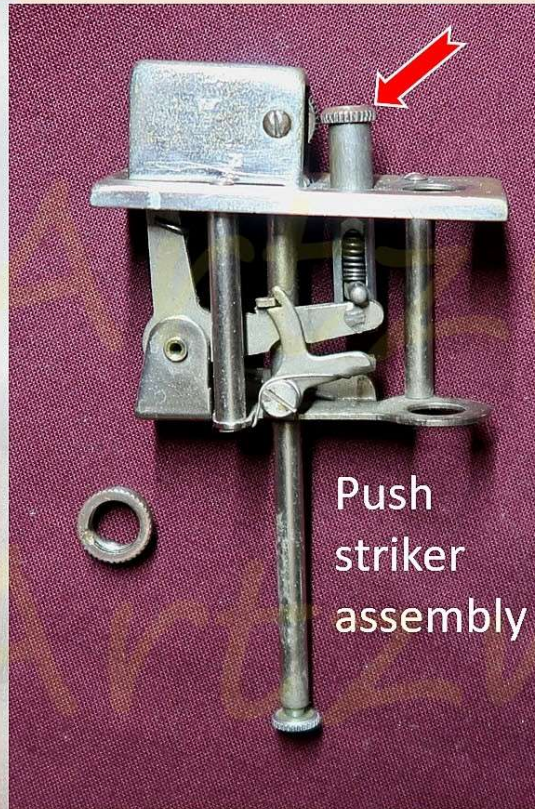


17J, E. Jackle, Germany

Ratchet pin

Eclydo (Lido) Germany; post war (1945-52)

Desk or Tabletop



Ronson (USA) 'touch tip' lighter with New Haven Movement (Maltese Falcon movie - 1941)

Desk or Tabletop



Ronson touch tip (Push to strike) Lighter

Desk or Tabletop

Phinney-Walker alarm clock lighter, Swiss, 1956



Desk or Tabletop



Torvic – Swiss
1960s



Squeeze
ends to
light



Desk or Tabletop



Cygnus 1970s with Citizen
7 Jewel movement – Japan



Balance
Wheel

Artzner

4. Other (Departure)

Look-A-Like Timepieces



Japan – 1940s? – 1950s

Departure (other)

Look-A-Like Timepiece



Homemade trench lighter – unknown source (French?)
circa 1920s

Departure (other)

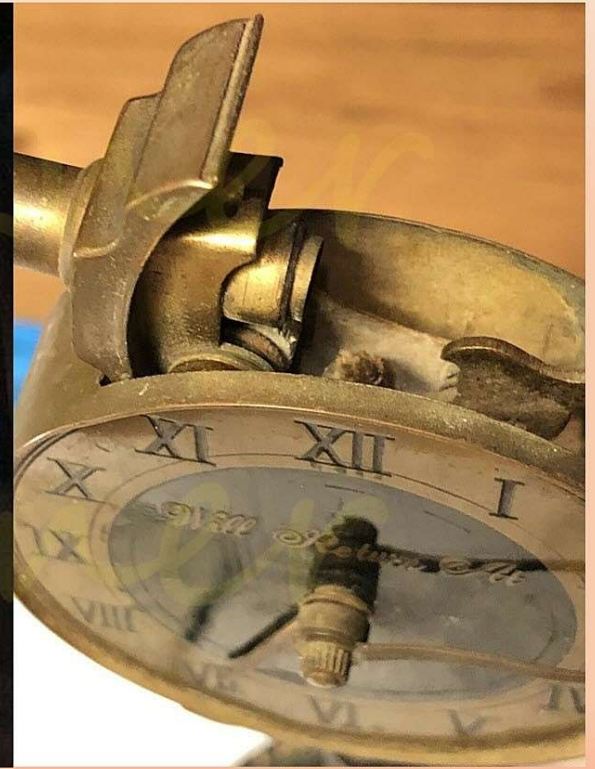
Look-A-Like Timepieces



Automatic - Austrian Chronos G – 1913 - 1925

Departure (other)

Look-A-Like Timepieces



Swank – Japan - 1950s – hands show time will return to desk
Adjustable Time Zones on base

Departure (other)



Faux clock lighter – Japan 1940s(?)

Departure (other)

Look-A-Like Timepieces



Another Faux chrome alarm clock lighter – Japan – early 1950s(?)

Departure (other)



Early 1950s

Probably a 'give-away'



Departure (other)

Advertisement



Penguin Superlative Automatic – Japan – ‘Flat Lighter’ famous for advertising ~1950s

(Ad: Time Clock – 554 Geary El Cortez Hotel, San Francisco)

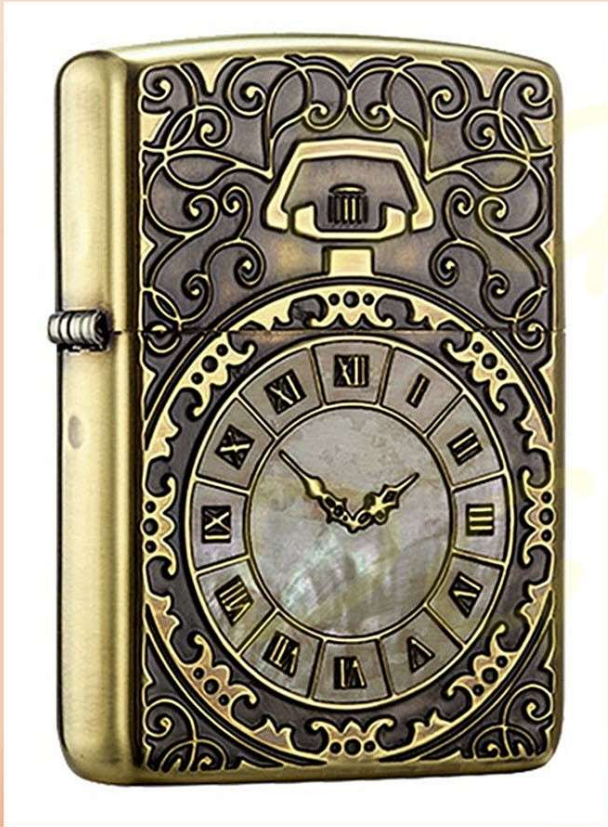
Departure (other)

Look-A-Like Lighter



Westclox – U.S.A (late 1960s – 1970s)

Departure (other)



Zippo (new) USA
(some designs from Japan)

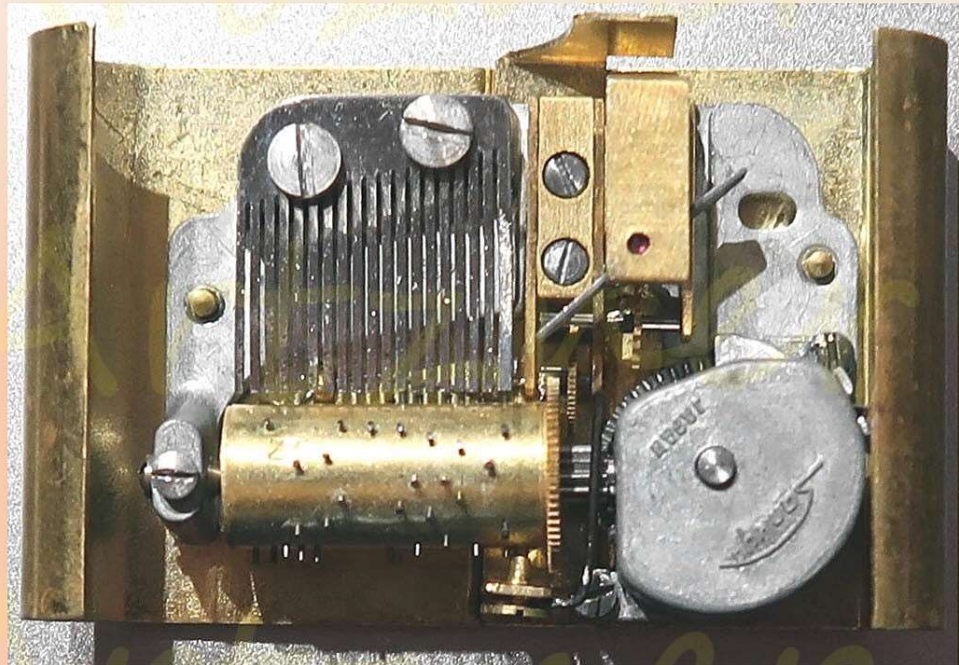


So, What's Next?



Japan lighter with music box (Sankyo Japan) that plays 'Smoke Get's In Your Eyes'

(1960s)



That's It!

Thank You For Your Time

Questions?

(Examples can be viewed at the Main Exhibit)